

# We'll be starting soon

Development Management  
Committee

16<sup>th</sup> February 2022



# **Development Management Committee**

**16<sup>th</sup> February 2022**

# **Development Management Committee**

## **Attendance & Declarations of interest (agenda item 1)**

# **Development Management Committee**

## **Agenda item 2: Minutes**

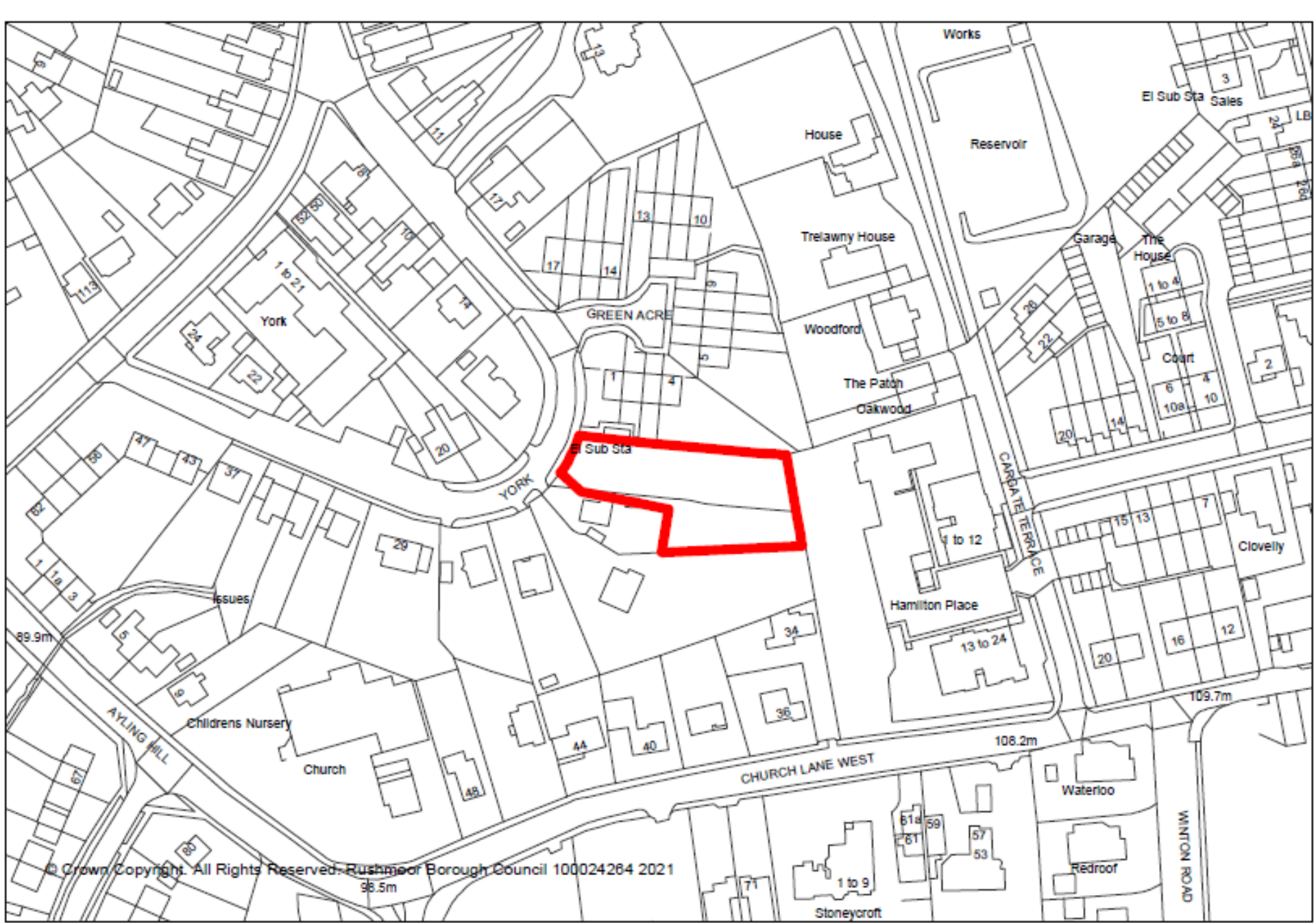
# **Development Management Committee**

## **Agenda item 3: Planning Applications**

# **Development Management Committee**

**Item 5: 22/00026/FULPP**

**Development Site, Land at ‘The  
Haven’, 19 York Crescent  
Aldershot**





© Crown Copyright. All Rights Reserved. Rushmoor Borough Council 100024264 2021







































© This drawing is copyright.  
It is sent to you in confidence and must not be reproduced or disclosed to third parties without our prior permission.


Do not scale from this drawing, other than for Local Authority Planning purposes.


This drawing is to be read in conjunction with all relevant consultants, specialist manufacturers drawings and specifications.


Any discrepancies in dimensions or details on or between these drawings should be drawn to your attention.

All dimensions are in millimetres unless noted otherwise.

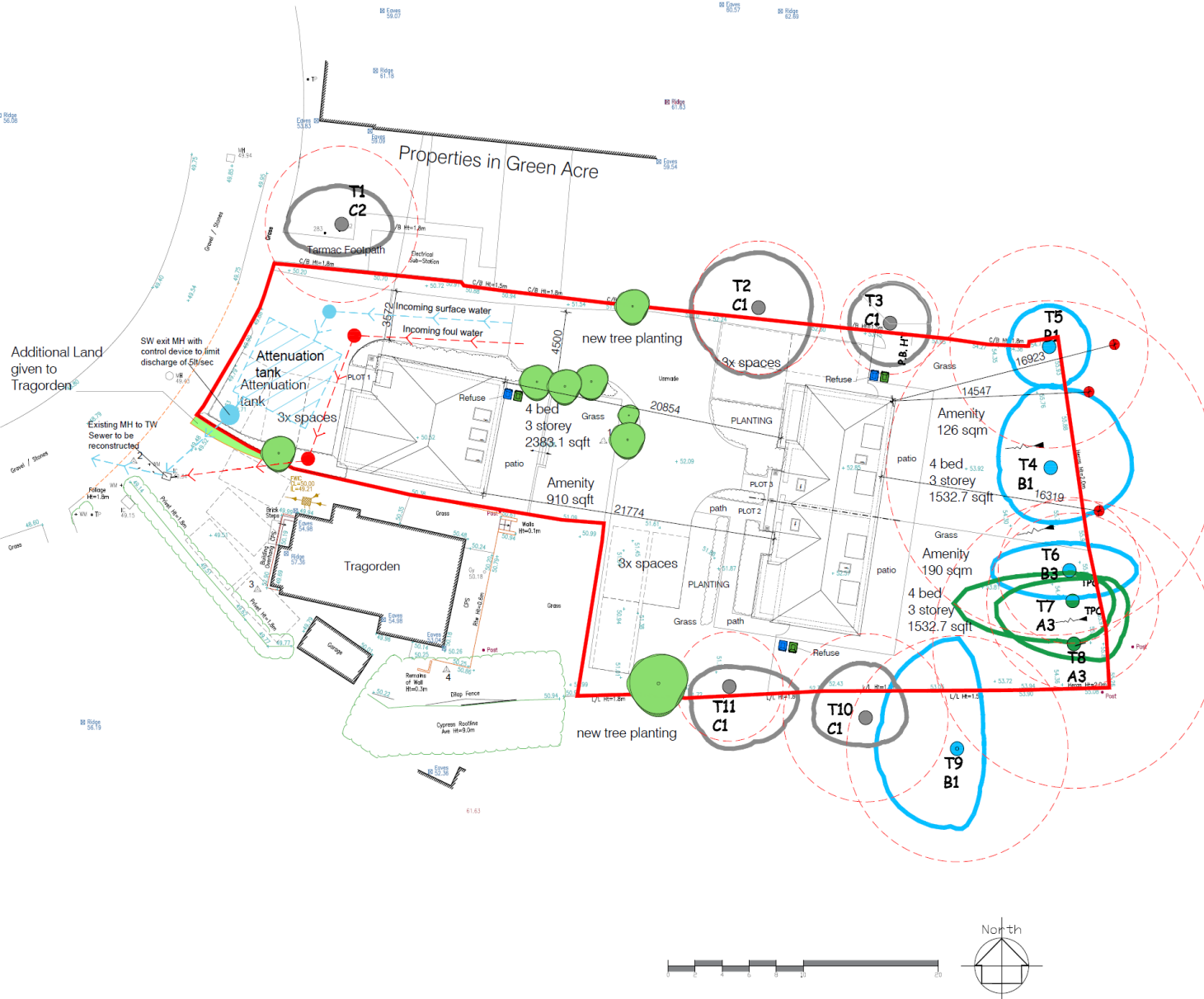
Any surveyed information incorporated within this drawing cannot be guaranteed as accurate unless confirmed by fixed dimension.

 Category 'A' Tree  
Canopy shown N E S W

 Category 'B' Tree  
Canopy shown N E S W

 Category 'C' Tree  
Canopy shown N E S W

 Root Protection Area



REV	DATE	DESCRIPTION	INITIAL	CHECKED
<b>PLANNING</b>				



harding rose architects

CLIENT		Samco Construction Ltd		
PROJECT		The Haven, 19 York Crescent, Aldershot, GU11 3JN		
TITLE		Proposed Site Layout		
SCALE	DATE			
1:200 @A2	03.02.21			
DRAWN	PROJECT NO.			
AC	20.797			
		P.01 G		

© This drawing is copyright.  
It is sent to you in confidence and must not be reproduced or disclosed to third parties without our prior permission.

Do not scale from this drawing, other than for Local Authority Planning purposes.

This drawing is to be read in conjunction with all relevant consultants, specialist manufacturers drawings and specifications.

Any discrepancies in dimensions or details on or between these drawings should be drawn to your attention.

All dimensions are in millimetres unless noted otherwise.

Any surveyed information incorporated within this drawing cannot be guaranteed as accurate unless confirmed by fixed dimension.

PLOT 1



Front Elevation (West)



PLOT 1



Side Elevation (North)

REV	DATE	DESCRIPTION	INITIALS	CHECKED
<b>PLANNING</b>				



harding rose architects

CLIENT	Samco Construction Ltd
PROJECT	The Haven, 19 York Crescent, Aldershot, GU11 3JN
TITLE	Plot 1 Proposed Front and Side Elevations

SCALE	1:100 @A2	DATE	28.08.20
DRAWN	AC	PROJECT NO.	20.797
			P.03 -

© This drawing is copyright.  
It is sent to you in confidence and must not be reproduced or disclosed to third parties without our prior permission.

Do not scale from this drawing, other than for Local Authority Planning purposes.

This drawing is to be read in conjunction with all relevant consultants, specialist manufacturers drawings and specifications.

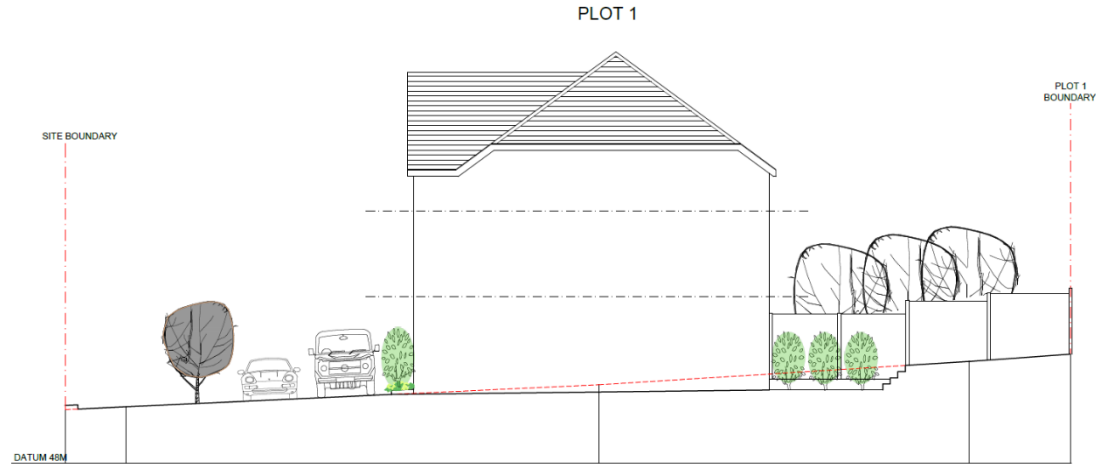
Any discrepancies in dimensions or details on or between these drawings should be drawn to our attention.

All dimensions are in millimetres unless noted otherwise.

Any surveyed information incorporated within this drawing cannot be guaranteed as accurate unless confirmed by fixed dimension.



Rear Elevation (East)



Rear Elevation (East)

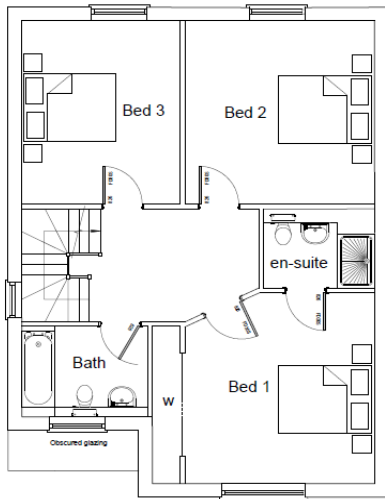
REV	DATE	DESCRIPTION	INITIALS	CHECKED
<b>PLANNING</b>				



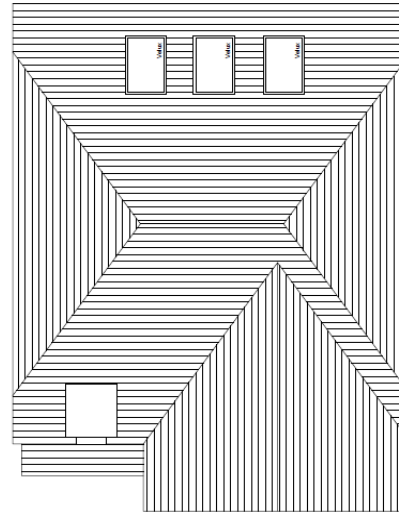
harding rose architects

CLIENT  
Samco Construction Ltd  
PROJECT  
The Haven, 19 York Crescent, Aldershot, GU11 3JN  
TITLE  
Plot 1 Proposed Rear and Side Elevations

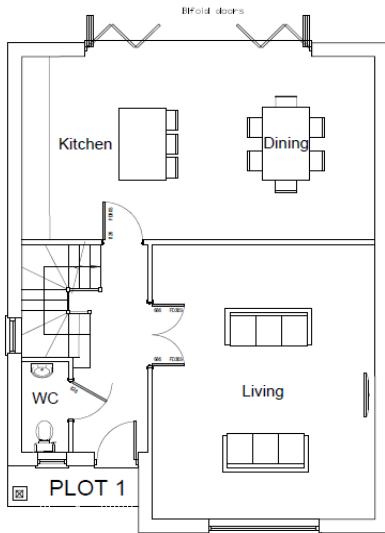
SCALE 1:100 @A2	DATE 28.08.20	<b>P.04</b> -
DRAWN AC	PROJECT NO. 20.797	



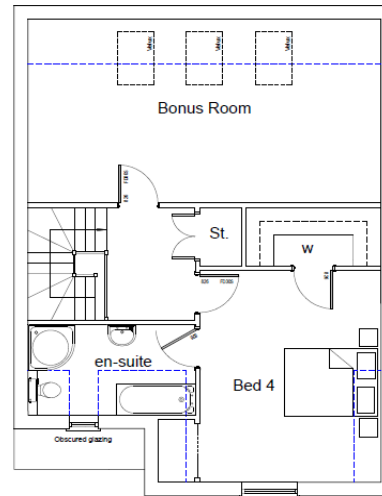
First Floor Plan  
73.8 sqm / 794.3 sqft



Roof Plan  
221.4 sqm / 2383.1 sqft



Ground Floor Plan  
73.8 sqm / 794.3 sqft



Second Floor Plan  
73.8 sqm / 794.3 sqft  
----- 2.1m head height

© This drawing is copyright.  
It is sent to you in confidence and must not be reproduced or disclosed to third parties without our prior permission.

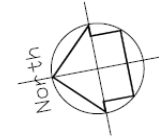
Do not scale from this drawing, other than for Local Authority Planning purposes.

This drawing is to be read in conjunction with all relevant consultants, specialist manufacturers drawings and specifications.

Any discrepancies in dimensions or details on or between these drawings should be drawn to our attention.

All dimensions are in millimetres unless noted otherwise.

Any surveyed information incorporated within this drawing cannot be guaranteed as accurate unless confirmed by fixed dimension.



REV	DATE	DESCRIPTION	INITIAL	CHECKED
<b>PLANNING</b>				



harding rose architects

CLIENT	Samco Construction Ltd			
PROJECT	The Haven, 19 York Crescent, Aldershot, GU11 3JN			
TITLE	Plot 1 Proposed Plans			

SCALE	DATE	28.08.20		
1:100 @A3	PROJECT NO.	20.797		
DRAWN	AC		P.02	-

© This drawing is copyright.  
It is sent to you in confidence and must not be reproduced or disclosed to third parties without our prior permission.

Do not scale from this drawing, other than for Local Authority Planning purposes.

This drawing is to be read in conjunction with all relevant consultants, specialist manufacturers drawings and specifications.

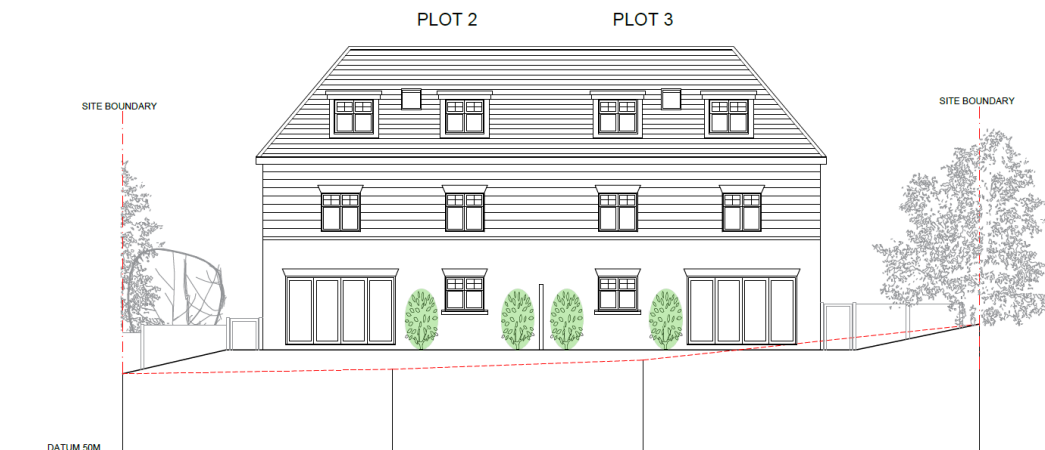
Any discrepancies in dimensions or details on or between these drawings should be drawn to our attention.

All dimensions are in millimetres unless noted otherwise.

Any surveyed information incorporated within this drawing cannot be guaranteed as accurate unless confirmed by fixed dimension.



Front Elevation (West)



Rear Elevation (East)



REV	DATE	DESCRIPTION	INITIAL	CHECKED
<b>PLANNING</b>				



harding rose architects

CLIENT	Samco Construction Ltd
PROJECT	The Haven, 19 York Crescent, Aldershot, GU11 3JN
TITLE	Plots 2 & 3 Proposed Front and Rear Elevations

SCALE	1:100 @A2	DATE	28.08.20
DRAWN	AC	PROJECT NO.	20.797
			P.06 -

© This drawing is copyright.  
It is sent to you in confidence and must not be reproduced or disclosed to third parties without our prior permission.

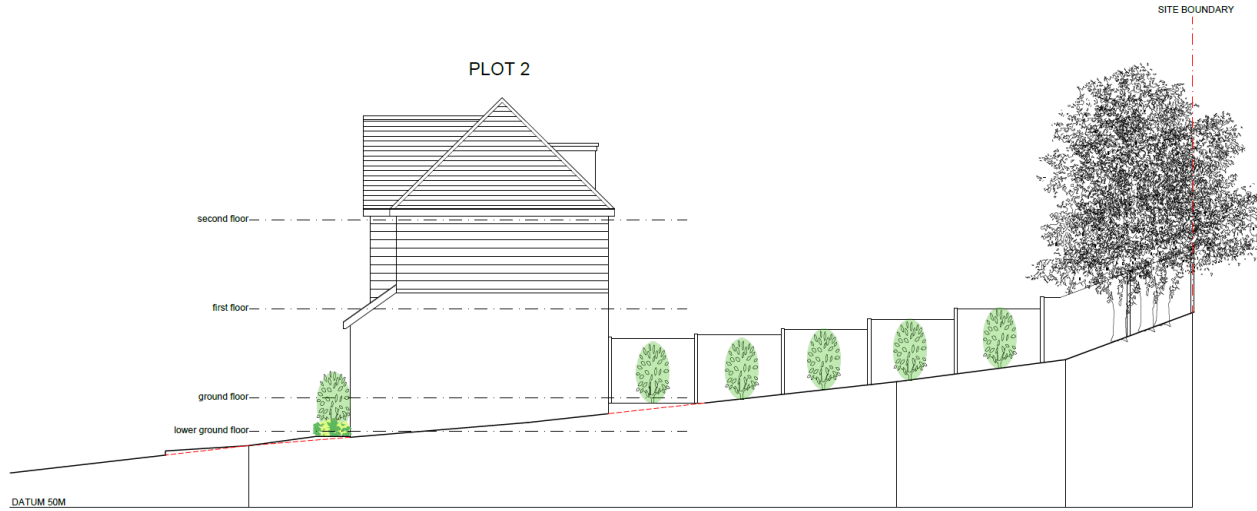
Do not scale from this drawing, other than for Local Authority Planning purposes.

This drawing is to be read in conjunction with all relevant consultants, specialist manufacturers drawings and specifications.

Any discrepancies in dimensions or details on or between these drawings should be drawn to our attention.

All dimensions are in millimetres unless noted otherwise.

Any surveyed information incorporated within this drawing cannot be guaranteed as accurate unless confirmed by fixed dimension.



Side Elevation (South)



Side Elevation (North)



REV	DATE	DESCRIPTION	INITIALS	CHECKED
<b>PLANNING</b>				



harding rose architects

CLIENT Samco Construction Ltd  
PROJECT The Haven, 19 York Crescent, Aldershot, GU11 3JN

TITLE Plots 2 & 3 Proposed Side Elevations

SCALE	DATE	PROJECT NO.	REV
1:100 @A2	28.08.20	20.797	P.07 -
DRAWN AC			

© This drawing is copyright.  
It is sent to you in confidence and must not be reproduced or disclosed to third parties without our prior permission.

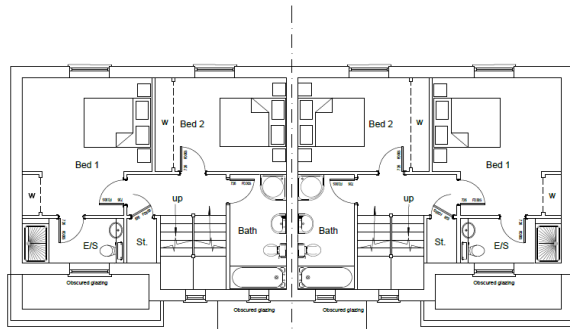
Do not scale from this drawing, other than for Local Authority Planning purposes.

This drawing is to be read in conjunction with all relevant consultants, specialist manufacturers drawings and specifications.

Any discrepancies in dimensions or details on or between these drawings should be drawn to our attention.

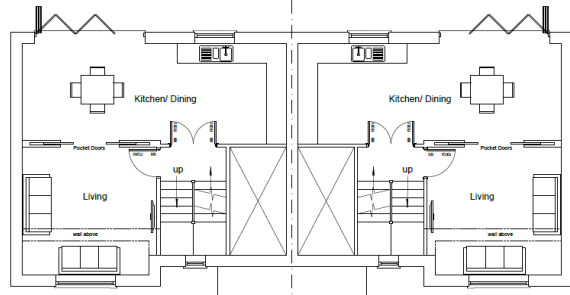
All dimensions are in millimetres unless noted otherwise.

Any surveyed information incorporated within this drawing cannot be guaranteed as accurate unless confirmed by fixed dimension.



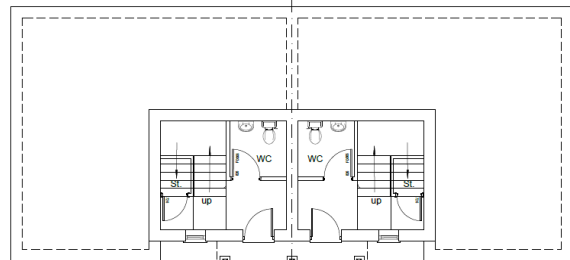
FIRST FLOOR PLAN  
PLOT 3  
48.1 sqm/ 517.7 sqft

FIRST FLOOR PLAN  
PLOT 2  
48.1 sqm/ 517.7 sqft



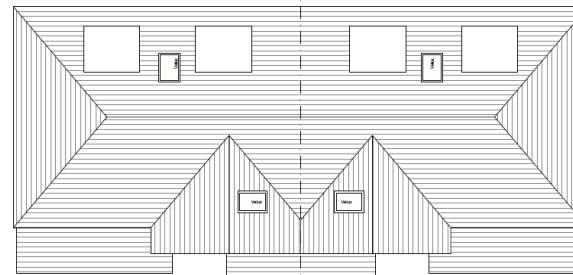
GROUND FLOOR PLAN  
PLOT 3  
47.5 sqm/ 511.2 sqft

GROUND FLOOR PLAN  
PLOT 2  
47.5 sqm/ 511.2 sqft



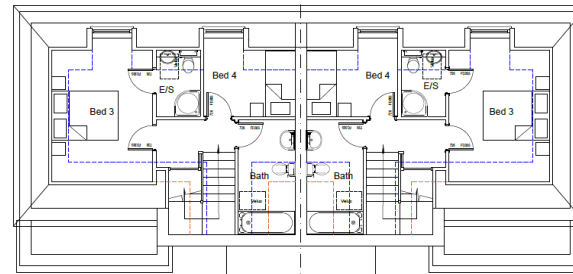
LOWER GROUND FLOOR PLAN  
PLOT 3  
12.6 sqm/ 135.6 sqft

LOWER GROUND FLOOR PLAN  
PLOT 2  
12.6 sqm/ 135.6 sqft



ROOF PLAN  
PLOT 3  
142.4 sqm/ 1532.7 sqft

ROOF PLAN  
PLOT 2  
142.4 sqm/ 1532.7 sqft

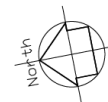


SECOND FLOOR PLAN  
PLOT 3  
34.2 sqm/ 368.1 sqft

--- 2.1m head height  
--- 1.5m head height

SECOND FLOOR PLAN  
PLOT 2  
34.2 sqm/ 368.1 sqft

--- 2.1m head height  
--- 1.5m head height



REV	DATE	DESCRIPTION	INITIAL	CHECKED
<b>PLANNING</b>				



harding rose architects

CLIENT Samco Construction Ltd  
PROJECT The Haven, 19 York Crescent, Aldershot, GU11 3JN

TITLE Plots 2 & 3 Proposed Plans

SCALE 1:100 @A2	DATE 28.08.20	<b>P.05</b> -
DRAWN AC	PROJECT NO. 20.797	

© This drawing is copyright.  
 It is sent to you in confidence and must not be reproduced or disclosed to third parties without our prior permission.

Do not scale from this drawing, other than for Local Authority Planning purposes.

This drawing is to be read in conjunction with all relevant consultants, specialist manufacturers drawings and specifications.

Any discrepancies in dimensions or details on or between these drawings should be drawn to our attention.

All dimensions are in millimetres unless noted otherwise.

Any surveyed information incorporated within this drawing cannot be guaranteed as accurate unless confirmed by fixed dimension.



Proposed Street Scene  
 (West)



REV	DATE	DESCRIPTION	INITIAL	CHECKED
<b>PLANNING</b>				

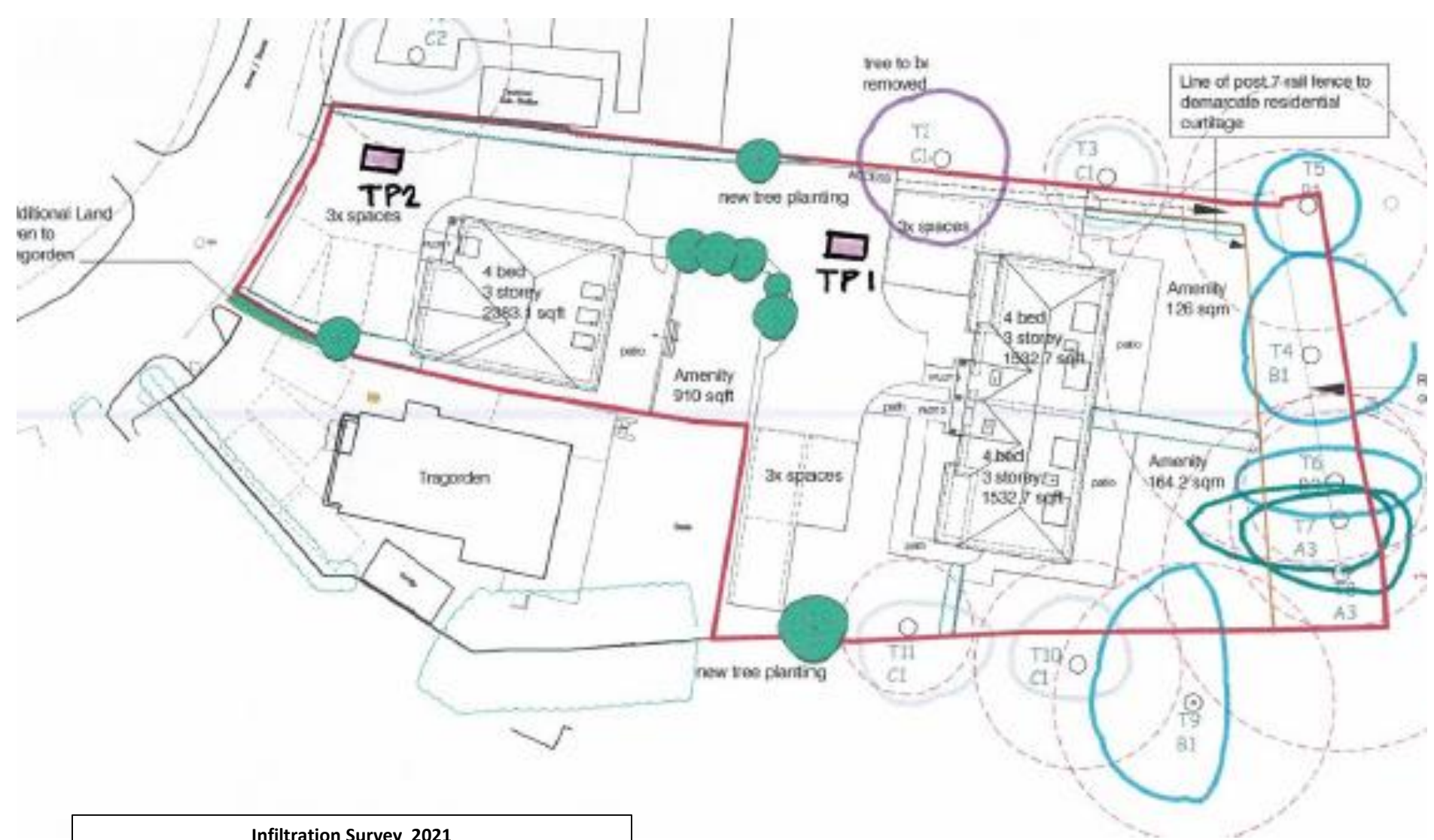


harding rose architects

CLIENT Samco Construction Ltd  
 PROJECT The Haven, 19 York Crescent, Aldershot, GU11 3JN  
 TITLE Proposed Street Scene

SCALE 1:100 @A2	DATE 28.08.20	P.08 -
DRAWN AC	PROJECT NO. 20.797	





Infiltration Survey 2021

EX MH. LIFTED COVER & BELIEVE TO BE SW. FROM CULLIES AT END OF

SW EXIT MH WITH CONTROL DEVICE TO LIMIT MAX DISCHARGE OF 5 LITRES/SEC

EXISTING M.H. TO TOWN SEWER TO BE RECONSTRUCTED.

T1  
C2

THE HAVEN SITE

T2  
C1

T3  
C1

T5  
B1

T4  
B1



T6  
B3

T7  
A3

T8  
A3

TRAGORDEN.

6.0x6.0x0.5DI CELLULAR STORAGE TANK FOR SW.

-  PROPOSED FLOW WATER
-  PROPOSED SURFACE WATER

Indictive Proposed Drainage Scheme



Consulting Civil & Structural Engineers

Job THE HAVEN, YORK CRESCENT ALDERSIDY

Title PROPOSED DRAINAGE SCHEMATIC C.A.

Scale 1:200	Date DEC 2021	Job No 21166	Dwg No SK1,	Rev
-------------	---------------	--------------	-------------	-----



Figure 2: Results of the badger assessment

© This drawing is copyright. It is sent to you in confidence and must not be reproduced or disclosed to third parties without our prior permission.

Do not scale from this drawing, other than for Local Authority Planning purposes.

This drawing is to be read in conjunction with all relevant consultants, specialist manufacturers drawings and specifications.

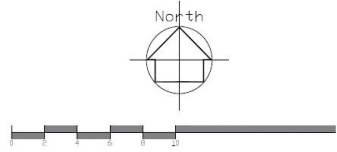
Any discrepancies in dimensions or details on or between these drawings should be drawn to your attention.

All dimensions are in millimetres unless noted otherwise.

Any surveyed information incorporated within this drawing cannot be guaranteed as accurate unless confirmed by fixed dimension.

Proposed gate to be fitted with opening flap for badgers 200 x 300mm located in the bottom of the gate. Additional openings 130 x 130mm to be provided in bottom of the fence to allow for hedgehog access

Line of 1.8m high close boarded fence to demarcate residential curtilage



REV	DATE	DESCRIPTION	INITIAL	CHECK
<b>PLANNING</b>				



harding rose architects

**LEGEND**

- Grass
- Driveway- Marshalls Block Paving - Brindle
- Marshalls Block Paving - Charcoal
- Patio/ Path- Marshalls Indian Sandstone
- Igloo Hedgehog Home x7
- Hedgehog Holes (5 square inches) with signage x3
- Bat Boxes on Dwellings x3
- Bat Boxes in Trees x3
- Bird Boxes on Dwellings x3
- Bird Boxes in Trees x3
- Log Pile/ Hibernacular x3
- Viburnum Opulus 'Roseum'
- Lavandula 'Hidcot'
- Native hedgerow (Hawthorn, Blackthorn, Dog Rose and Holly)
- Wildflower Meadow
- Category 'A' Tree Canopy shown N E S W
- Category 'B' Tree Canopy shown N E S W
- Prunus Spinosa
- Lonicera Periclymenum
- Conyus Avellana
- Rosa Canina
- Category 'C' Tree Canopy shown N E S W
- Root Protection Area

CLIENT	Samco Construction Ltd		
PROJECT	The Haven, 19 York Crescent, Aldershot, GU11 3JN		
TITLE	Proposed Landscaping Plan		
SCALE	1:200 @A2	DATE	03.02.22
DRAWN	AC	PROJECT NO.	20.797
			P.09 E

© This drawing is copyright.  
It is sent to you in confidence and must not be reproduced or disclosed to third parties without our prior permission.


Do not scale from this drawing, other than for Local Authority Planning purposes.


This drawing is to be read in conjunction with all relevant consultants, specialist manufacturers drawings and specifications.


Any discrepancies in dimensions or details on or between these drawings should be drawn to your attention.


All dimensions are in millimetres unless noted otherwise.

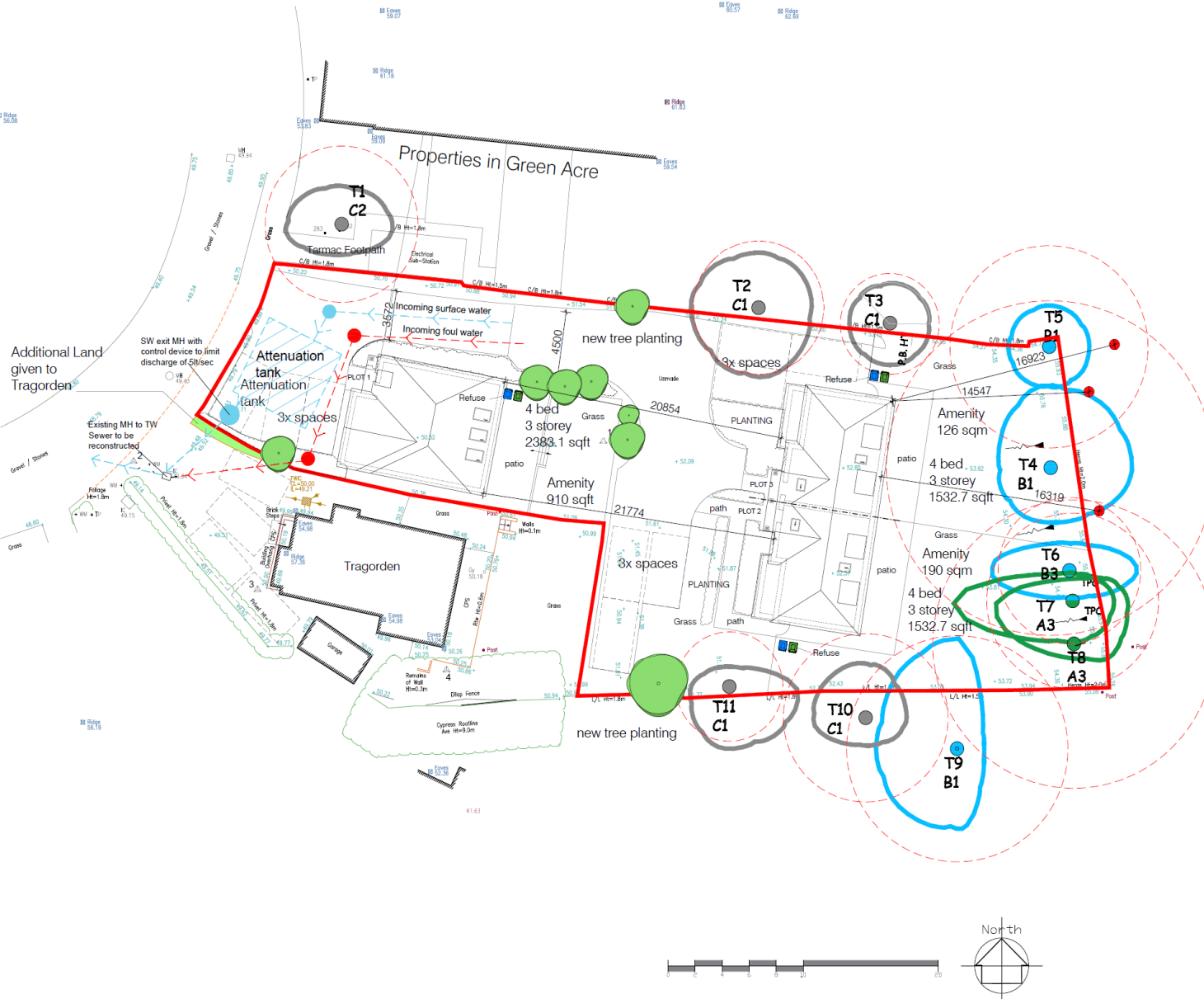
Any surveyed information incorporated within this drawing cannot be guaranteed as accurate unless confirmed by fixed dimension.

 Category 'A' Tree  
Canopy shown N E S W

 Category 'B' Tree  
Canopy shown N E S W

 Category 'C' Tree  
Canopy shown N E S W

 Root Protection Area



REV	DATE	DESCRIPTION	INITIAL	CHECKED
<b>PLANNING</b>				



harding rose architects

CLIENT		Samco Construction Ltd		
PROJECT		The Haven, 19 York Crescent, Aldershot, GU11 3JN		
TITLE		Proposed Site Layout		
SCALE	DATE			
1:200 @A2	03.02.21			
DRAWN	PROJECT NO.			
AC	20.797			P.01 G



# **Development Management Committee**

**16<sup>th</sup> February 2022**

# The meeting has now finished

Development Management  
Committee

16<sup>th</sup> February 2022

